

This information provided by:

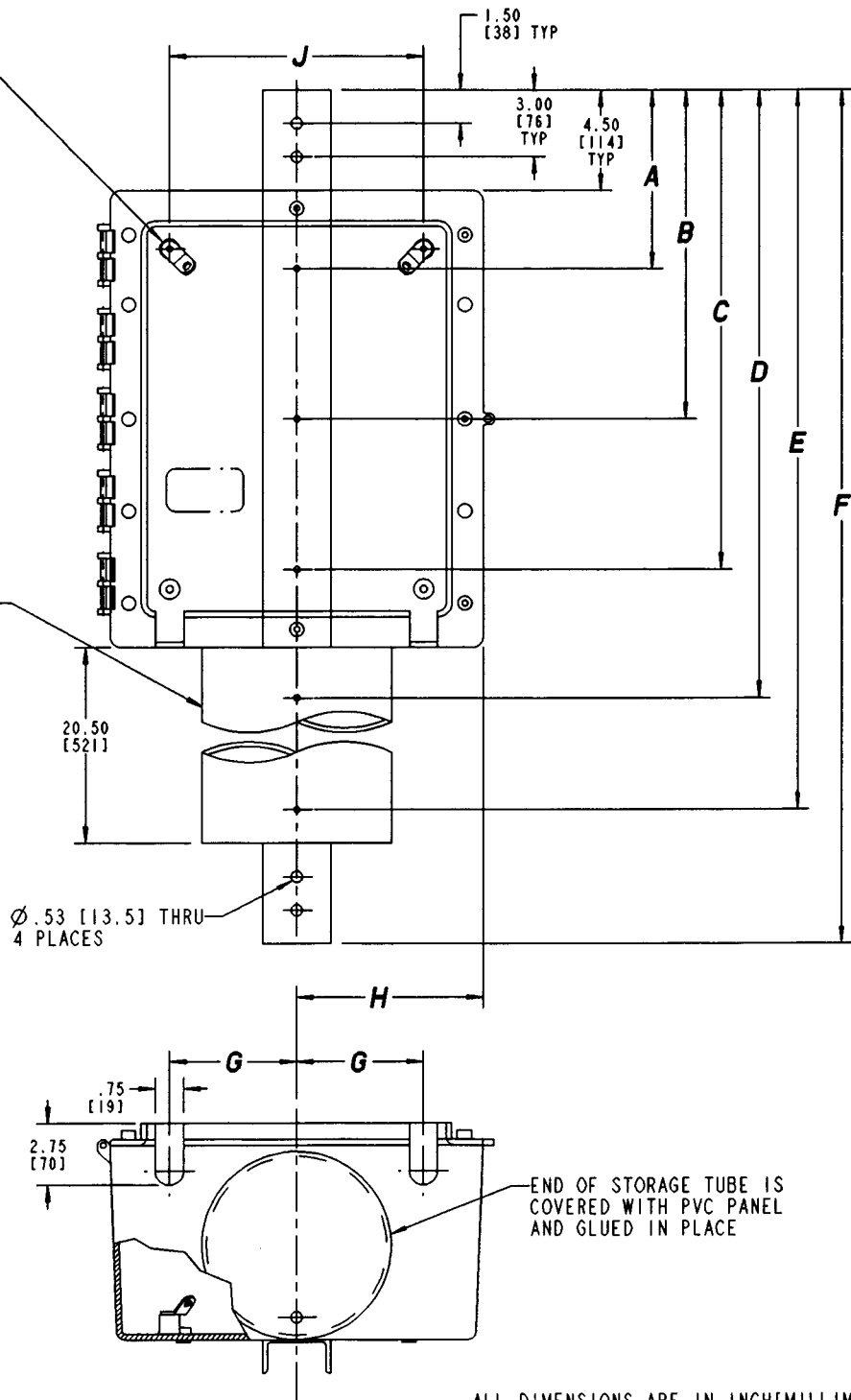


Gross Automation
www.grossautomation.com

Call Toll Free:
800-349-5827

NOTE:
 ALL ENCLOSURES INCLUDE
 FOUR (4) HEAVY DUTY
 28" LONG CABLE TIES
 IN ADDITION TO
 TWO (2) INSTALLED
 HANGER BRACKETS (SHOWN)

STORAGE TUBE
 P/N 63018
 Ø8.40 [213]



ALL DIMENSIONS ARE IN INCH/MILLIMETERS

PART NUMBER	BASE BOX	A	B	C	D	E	F	G	H	J
SPL222	C2420B4	7.50 [191]	16.50 [419]	25.50 [648]	32.00 [813]	46.00 [1168]	59.00 [1499]	5.62 [143]	10.25 [260]	15.25 [387]
SPL211	C2420C4									
SPL122	C3024B4	9.50 [241]	19.75 [502]	29.75 [756]	38.00 [965]	52.00 [1321]	65.00 [1651]	7.62 [194]	12.25 [311]	19.25 [489]
SPL111	C3024C4									

TITLE **SPLICE ENCLOSURE**

DRN DATE
 DPR 3-27-02

PART NO:

SEE CHART

LAMSON & SESSIONS

ALL DRAWINGS ARE THE PROPERTY OF LAMSON &
 SESSIONS AND SHALL NOT BE REPRODUCED IN ANY
 FORM WITHOUT LAMSON & SESSIONS' APPROVAL AND
 ARE TO BE PROMPTLY RETURNED UPON REQUEST.

APP. DATE

DRAWING NO:

AC04136

REV.