

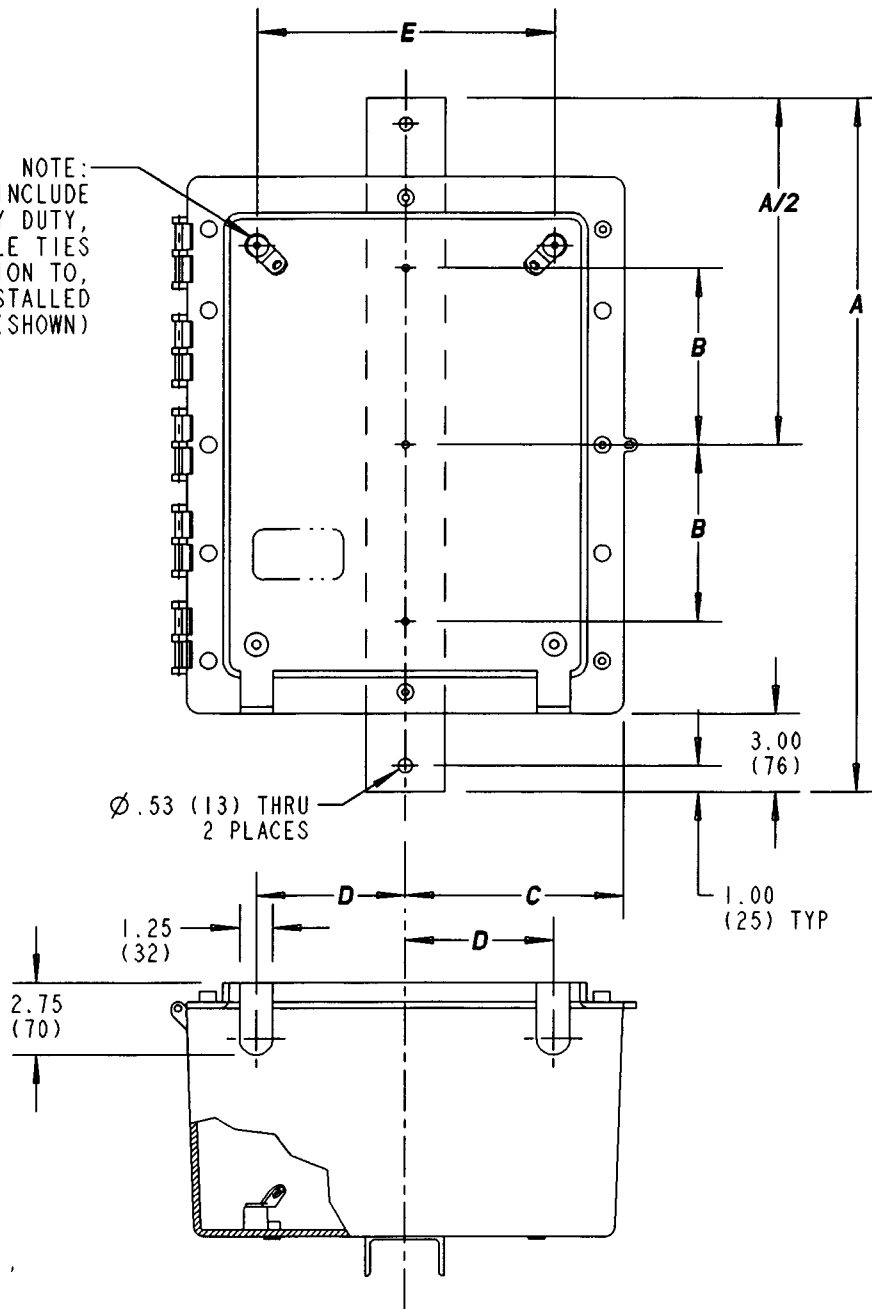
This information provided by:



Gross Automation  
[www.grossautomation.com](http://www.grossautomation.com)

Call Toll Free:  
**800-349-5827**

NOTE:  
ALL ENCLOSURES INCLUDE  
FOUR (4) HEAVY DUTY,  
28" LONG CABLE TIES  
IN ADDITION TO,  
TWO (2) INSTALLED  
HANGER BRACKETS (SHOWN)



PART NUMBER	ITEM 1 BASE BOX	ITEM 2 ALUMINUM CHANNEL 6061-T6	A (in/mm)	B (in/mm)	C (in/mm)	D (in/mm)	E (in/mm)
SLK11	C3024C4	3 x .130 x 36.5"	36.5 (927)	10 (254)	12.25 (311)	7.62 (194)	19.25 (489)
SLK12	C3024B4	3 x .130 x 36.5"	36.5 (927)	10 (254)	12.25 (311)	7.62 (194)	19.25 (489)
SLK21	C2420C4	3 x .130 x 30.5"	30.5 (775)	8 (203)	10.25 (260)	5.62 (143)	15.25 (387)
SLK22	C2420B4	3 x .130 x 30.5"	30.5 (775)	8 (203)	10.25 (260)	5.62 (143)	15.25 (387)
SLK31	C2016C4	3 x .130 x 26.5"	26.5 (673)	6.75 (171)	8.25 (210)	3.62 (92)	11.25 (286)
SLK32	C2016B4	3 x .130 x 26.5"	26.5 (673)	6.75 (171)	8.25 (210)	3.62 (92)	11.25 (286)

<b>TITLE</b>		<b>SLACK ENCLOSURES</b>		<b>DRN</b>	<b>DATE</b>	<b>PART NO:</b>	
<b>LAMSON &amp; SESSIONS</b>		ALL DRAWINGS ARE THE PROPERTY OF LAMSON & SESSIONS AND SHALL NOT BE REPRODUCED IN ANY FORM WITHOUT LAMSON & SESSIONS' APPROVAL AND ARE TO BE PROMPTLY RETURNED UPON REQUEST.		RG	12/15/00	<b>SEE CHART</b>	
				<b>APP.</b>	<b>DATE</b>		
				GDT	12/16/00	<b>AC03861</b>	