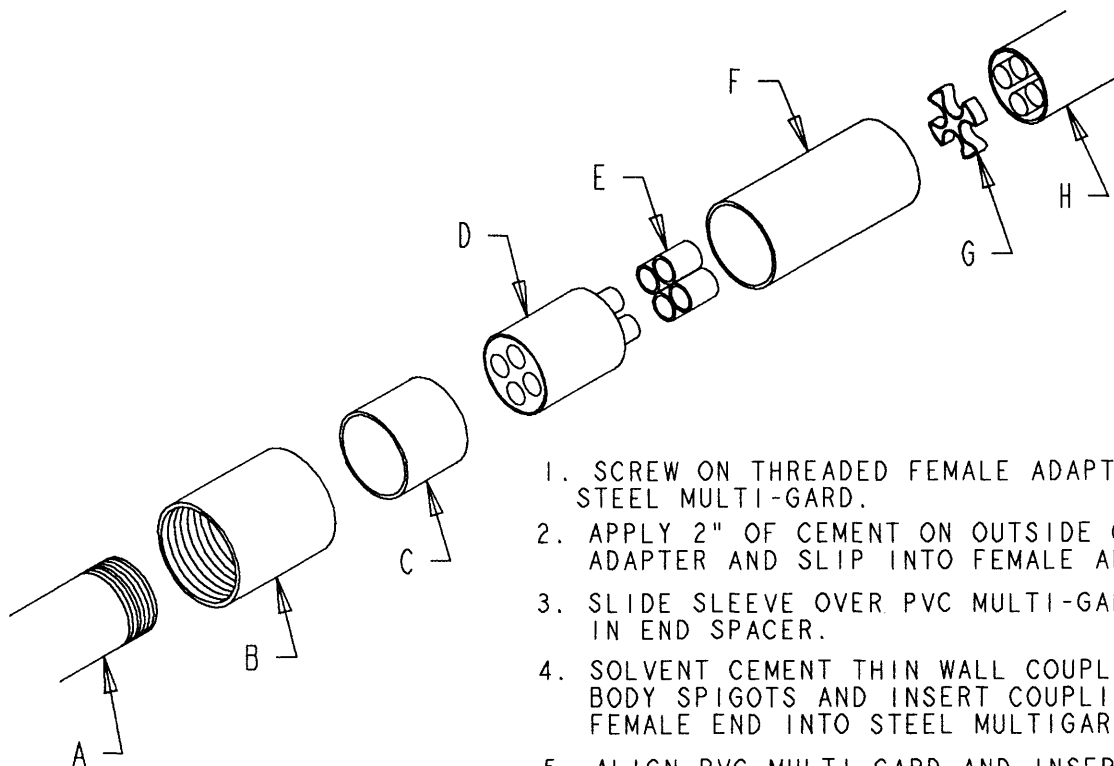


This information provided by:

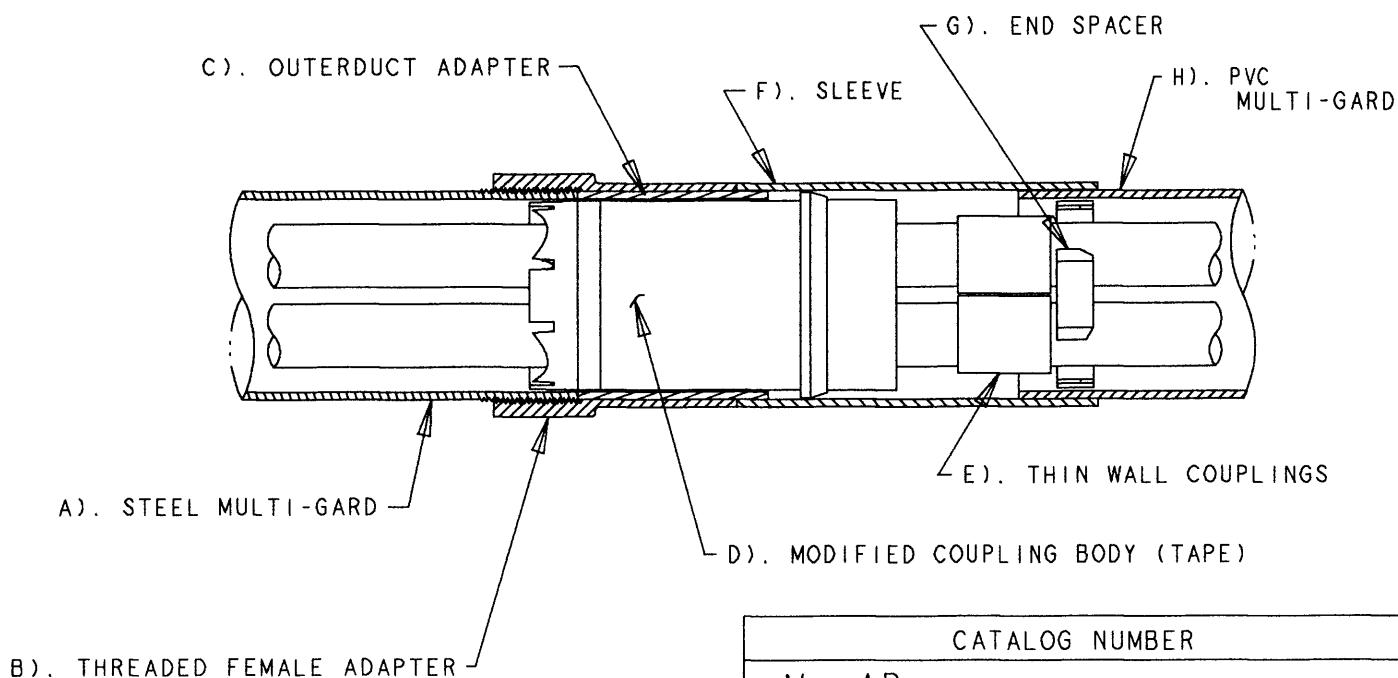


Gross Automation
www.grossautomation.com

Call Toll Free:
800-349-5827



1. SCREW ON THREADED FEMALE ADAPTER TO EXISTING STEEL MULTI-GARD.
2. APPLY 2" OF CEMENT ON OUTSIDE OF OUTERDUCT ADAPTER AND SLIP INTO FEMALE ADAPTER.
3. SLIDE SLEEVE OVER PVC MULTI-GARD AND PRESS IN END SPACER.
4. SOLVENT CEMENT THIN WALL COUPLINGS TO COUPLING BODY SPIGOTS AND INSERT COUPLING BODY'S FEMALE END INTO STEEL MULTIGARD ASSEMBLY.
5. ALIGN PVC MULTI-GARD AND INSERT OVER COUPLING BODY SPIGOTS UNTIL INNERDUCT PRESS INTO THIN WALL COUPLINGS.
6. APPLY 2" OF CEMENT TO OUTSIDE OF PVC MULTI-GARD END AND OUTSIDE OF 4" OUTERDUCT ADAPTER. SLIDE SLEEVE FORWARD UNTIL IT BUTTS AGAINST THREADED FEMALE ADAPTER.



CATALOG NUMBER

M-AR-
 E 3 = 3-WAY INNERDUCT
 E 4 = 4-WAY INNERDUCT
 X = TYPE C OUTER DUCT
 F = TYPE 40 OUTER DUCT
 D = TYPE 80 OUTER DUCT

TITLE ADAPTER FITTING, PVC TO STEEL MULTI-GARD

LAMSON & SESSIONS

ALL DRAWINGS ARE THE PROPERTY OF LAMSON & SESSIONS AND SHALL NOT BE REPRODUCED IN ANY FORM WITHOUT LAMSON & SESSIONS' APPROVAL AND ARE TO BE PROMPTLY RETURNED UPON REQUEST.

DRN
TCAT

DATE
1-26-93

PART NO:

SEE CHART

APP
[Signature]

DATE
8/21/99

DRAWING NO:

AC01240

REV.
A