

This information provided by:



Gross Automation
www.grossautomation.com

Call Toll Free:
800-349-5827

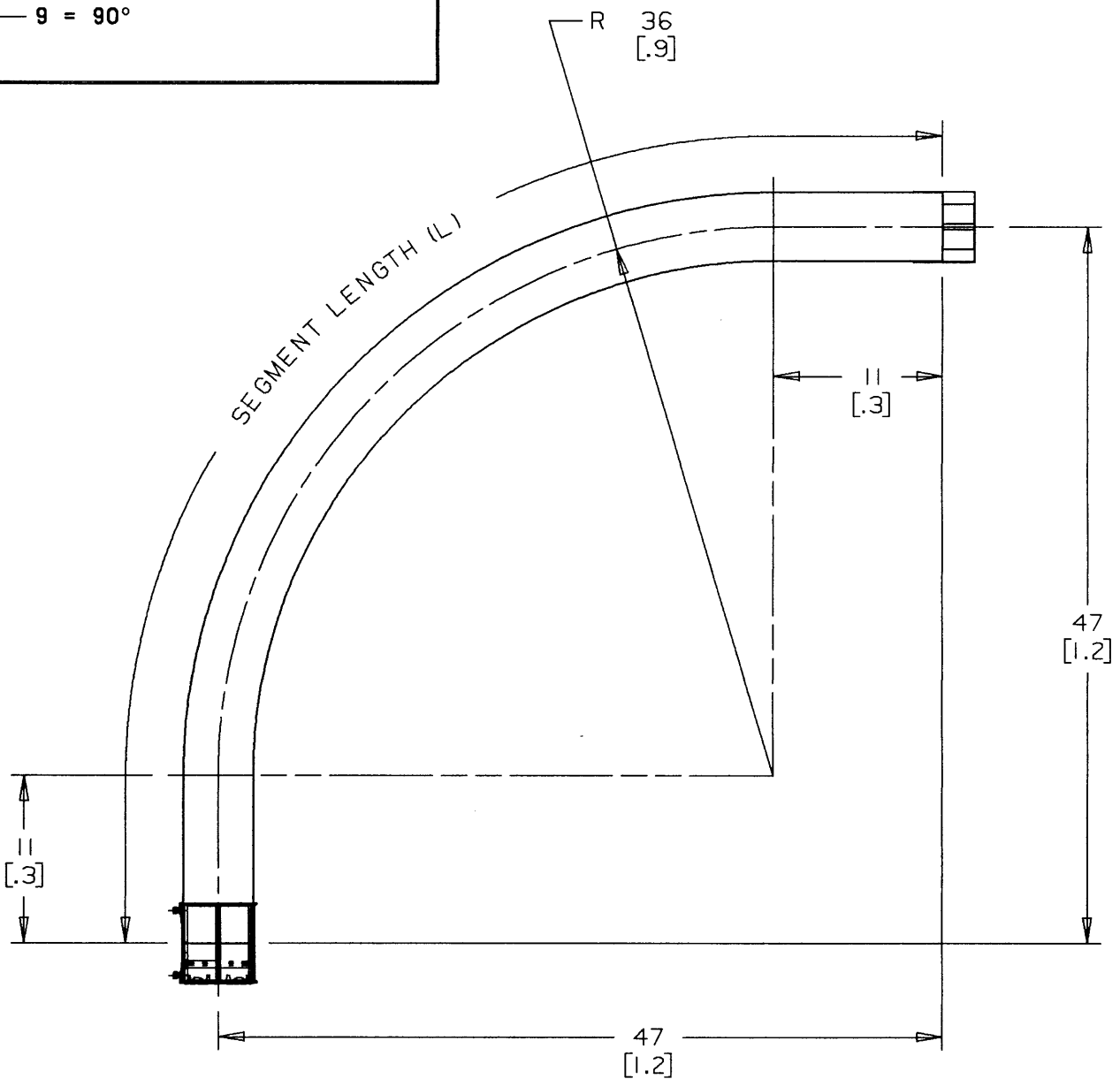
CATALOG NUMBER

ME FN S

3 = 3-WAY INNER DUCT
4 = 4-WAY INNER DUCT

7 = 45°

9 = 90°



PART NUMBER	SEGMENT LENGTH (L) (INCHES / METERS)
ME7FN_S	50.30 (1.28)
ME9FN_S	78.50 (1.99)

TITLE: OUTLINE - MULTI-GARD SWEEPS (EMT)

DRN. DATE
CKN 6-10-96

PART NO:

SEE CHART

LAMSON & SESSIONS

ALL DRAWINGS ARE THE PROPERTY OF LAMSON & SESSIONS AND SHALL NOT BE REPRODUCED IN ANY FORM WITHOUT LAMSON & SESSIONS' APPROVAL AND ARE TO BE PROMPTLY RETURNED UPON REQUEST.

APP. DATE
KEF 1-8-97

DRAWING NO:

AC02673

REV.
A