

This information provided by:



Gross Automation  
[www.grossautomation.com](http://www.grossautomation.com)

Call Toll Free:  
**800-349-5827**

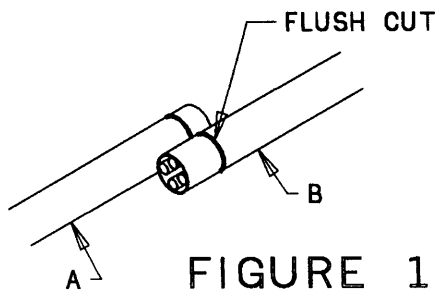


FIGURE 1

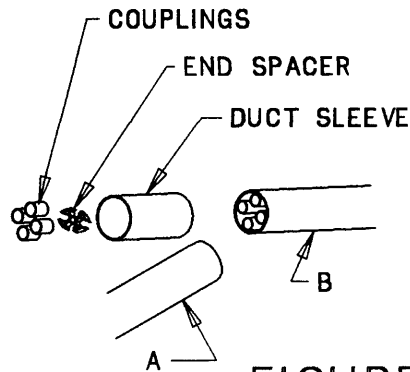


FIGURE 2

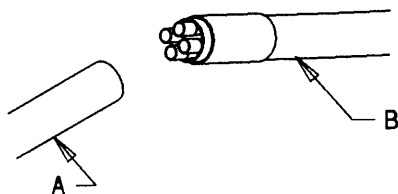
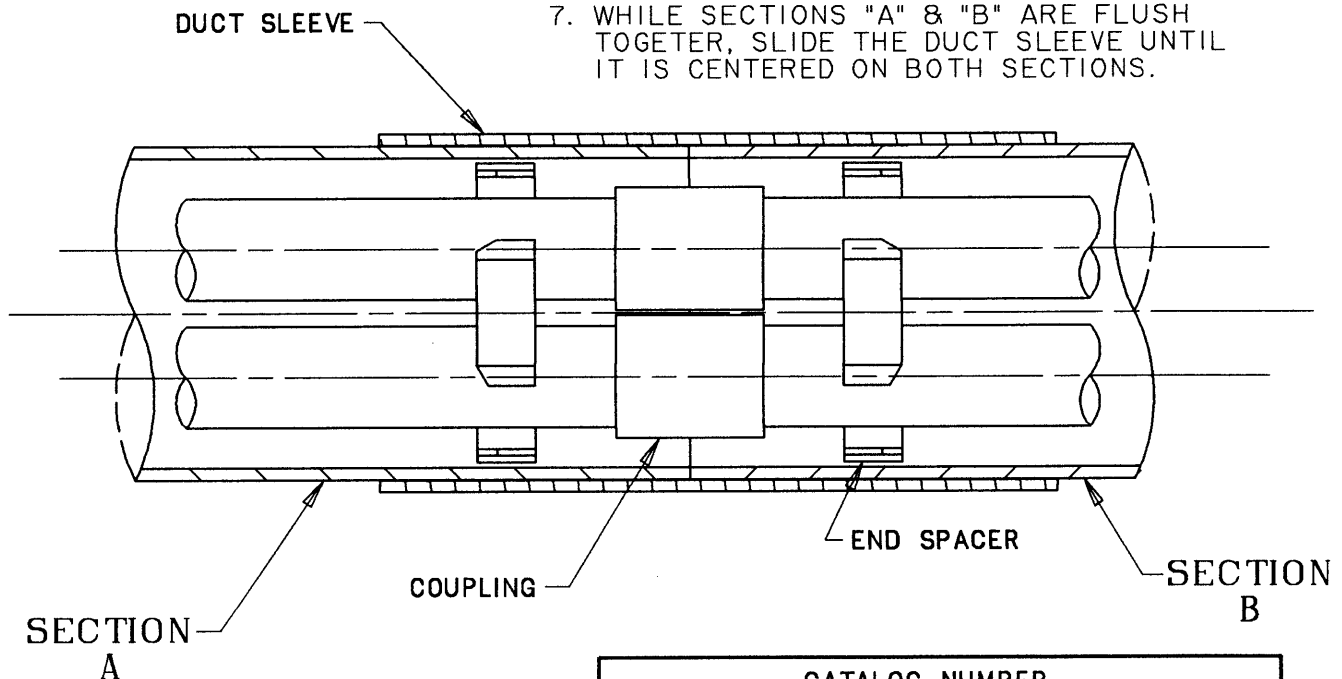


FIGURE 3

1. FLUSH CUT MULTI-GARD SECTION "B" AS SHOWN IN FIGURE #1.
2. SLIDE OUTER DUCT SLEEVE OVER MULTI-GARD SECTION "B" AS SHOWN IN FIGURE #2.
3. INSERT END SPACER INTO MULTI-GARD SPIGOT END (CHAMFER SIDE IN) AS SHOWN IN FIGURE #2.
4. CEMENT COUPLINGS ONTO INNER DUCTS OF MULTI-GARD SECTION "B" AS SEEN IN FIGURE 2.
5. LIFT SECTION "A" & "B" (SLIGHTLY) TO ALLOW THE COUPLINGS ON SECTION "B" TO ALIGN AND SLIDE OVER THE INNER DUCTS ON SECTION "A". CEMENT & PUSH THE SECTIONS TOGETHER.
6. APPLY A 2" MIN. WIDTH OF CEMENT TO OUTER DUCT OF SECTIONS "A" & "B" (ALL AROUND).
7. WHILE SECTIONS "A" & "B" ARE FLUSH TOGETHER, SLIDE THE DUCT SLEEVE UNTIL IT IS CENTERED ON BOTH SECTIONS.



CATALOG NUMBER	
M	CC
3 = 3-WAY INNER DUCT 4 = 4-WAY INNER DUCT X = TYPE C OUTER DUCT F = TYPE 40 OUTER DUCT D = TYPE 80 OUTER DUCT	

TITLE: OUTLINE - STANDARD COUPLING

DRN. DATE  
TCAT 9-02-92

PART NO:

SEE CHART

LAMSON & SESSIONS

ALL DRAWINGS ARE THE PROPERTY OF LAMSON & SESSIONS AND SHALL NOT BE REPRODUCED IN ANY FORM WITHOUT LAMSON & SESSIONS' APPROVAL AND ARE TO BE PROMPTLY RETURNED UPON REQUEST.

APP. DATE  
JP 2-06-95

DRAWING NO:

AC00796

REV.  
A