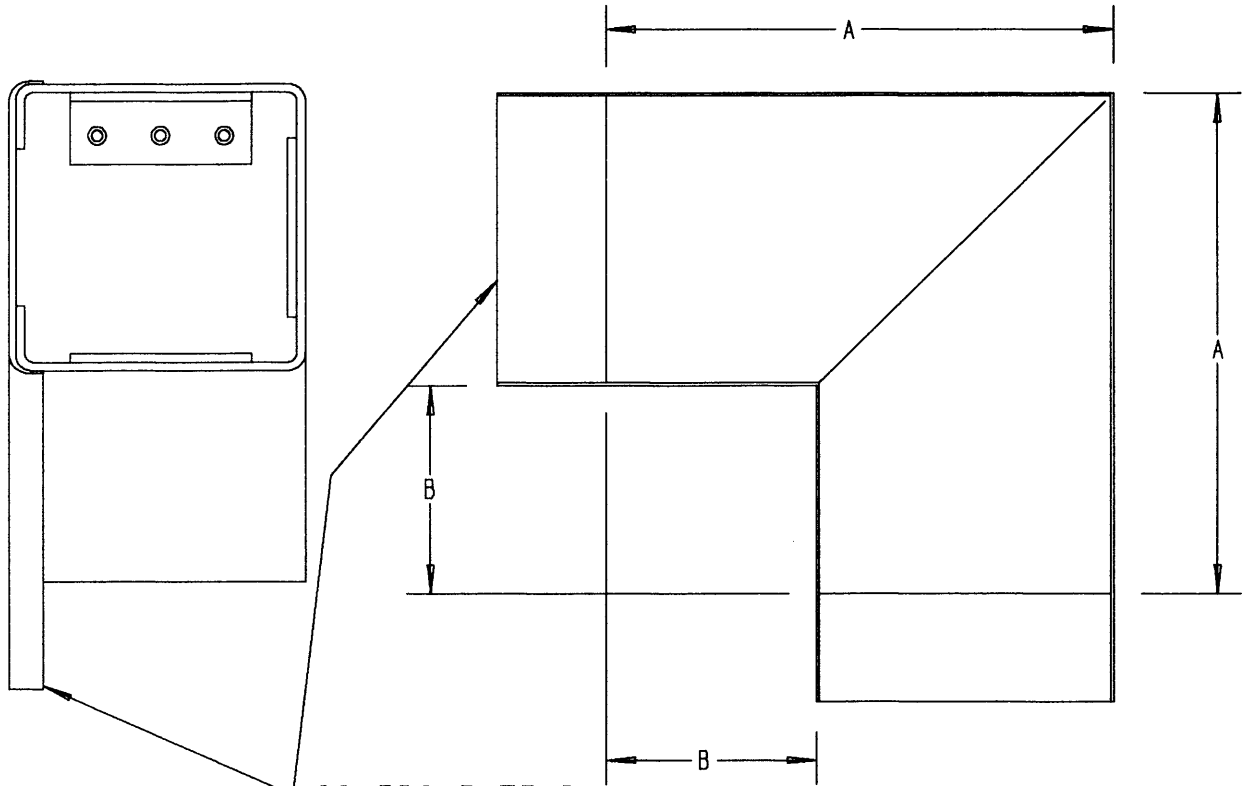


This information provided by:



Gross Automation  
[www.grossautomation.com](http://www.grossautomation.com)

Call Toll Free:  
**800-349-5827**



COVERS EXTEND  
APPROXIMATELY  
1-1/2" (40MM)  
BEYOND BASE

CEP P/N	EGALINE PVC LAY-IN WIREWAY FITTINGS		
	PRODUCT DESCRIPTION	A (IN) (MM)	B (IN) (MM)
EGLFN	4 X 4" FLAT ELBOW	7 (177.8)	3 (76.2)
EGLFR	6 X 6" FLAT ELBOW	10-1/2 (266.7)	4-1/2 (114.3)

P/N'S EGLFJ AND EGLFL ARE ON DRAWING AC03344

NOTES:

1. PRODUCT IS UL LISTED. FILE E163227
2. MATERIAL : UL 94V-0 PVC
3. COLOR : GRAY

TITLE <b>90° BEND FLAT COVER - WIREWAY</b>		DRN <b>DJK</b>	DATE <b>10-6-94</b>	PART NO.: <b>EGLF SERIES</b>	
<b>LAMSON &amp; SESSIONS</b>		ALL DRAWINGS ARE THE PROPERTY OF LAMSON & SESSIONS AND SHALL NOT BE REPRODUCED IN ANY FORM WITHOUT LAMSON & SESSIONS' APPROVAL AND ARE TO BE PROMPTLY RETURNED UPON REQUEST.		APP. <b>JM</b>	DATE <b>4-20-98</b>
				DRAWING NO.:	<b>AC01942</b>
				REV.	<b>B</b>