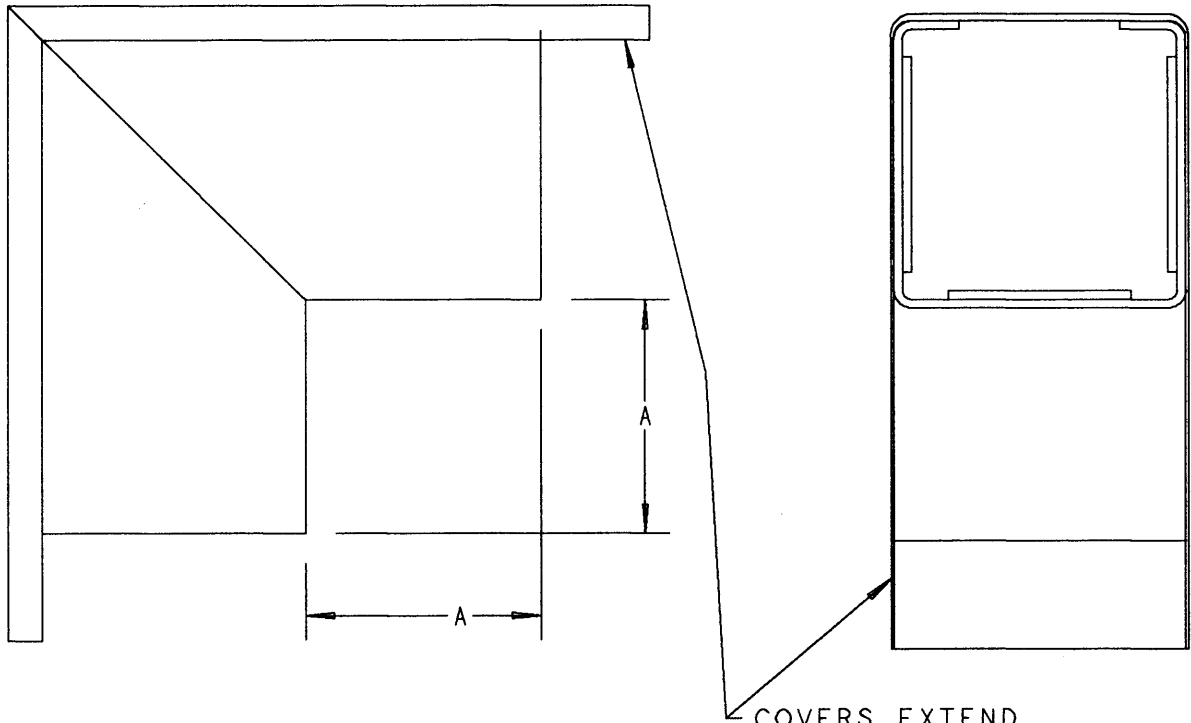


This information provided by:



Gross Automation  
[www.grossautomation.com](http://www.grossautomation.com)

Call Toll Free:  
**800-349-5827**



COVERS EXTEND  
APPROXIMATELY  
1-1/2" (40MM)  
BEYOND BASE

CEP P/N	EGALINE PVC LAY-IN WIREWAY FITTINGS	
	PRODUCT DESCRIPTION	A IN (MM)
EGLEL	3 X 3" EXTERNAL ELBOW	3 (76.2)
EGLEN	4 X 4" EXTERNAL ELBOW	3 (76.2)
EGLER	6 X 6" EXTERNAL ELBOW	4-1/2 (114.3)

P/N'S EGLEJ IS ON DRAWING AC03345

NOTES:

1. PRODUCT IS UL LISTED. FILE E163227
2. MATERIAL : UL 94V-0 PVC
3. COLOR : GRAY

TITLE 90° BEND EXTERNAL COVER - WIREWAY		DRN DJK	DATE 10-7-94	PART NO: <b>EGLE SERIES</b>	
LAMSON & SESSIONS	ALL DRAWINGS ARE THE PROPERTY OF LAMSON & SESSIONS AND SHALL NOT BE REPRODUCED IN ANY FORM WITHOUT LAMSON & SESSIONS' APPROVAL AND ARE TO BE PROMPTLY RETURNED UPON REQUEST.	APP. JIM	DATE 4-20-98	DRAWING NO: <b>AC01943</b>	REV. <b>B</b>