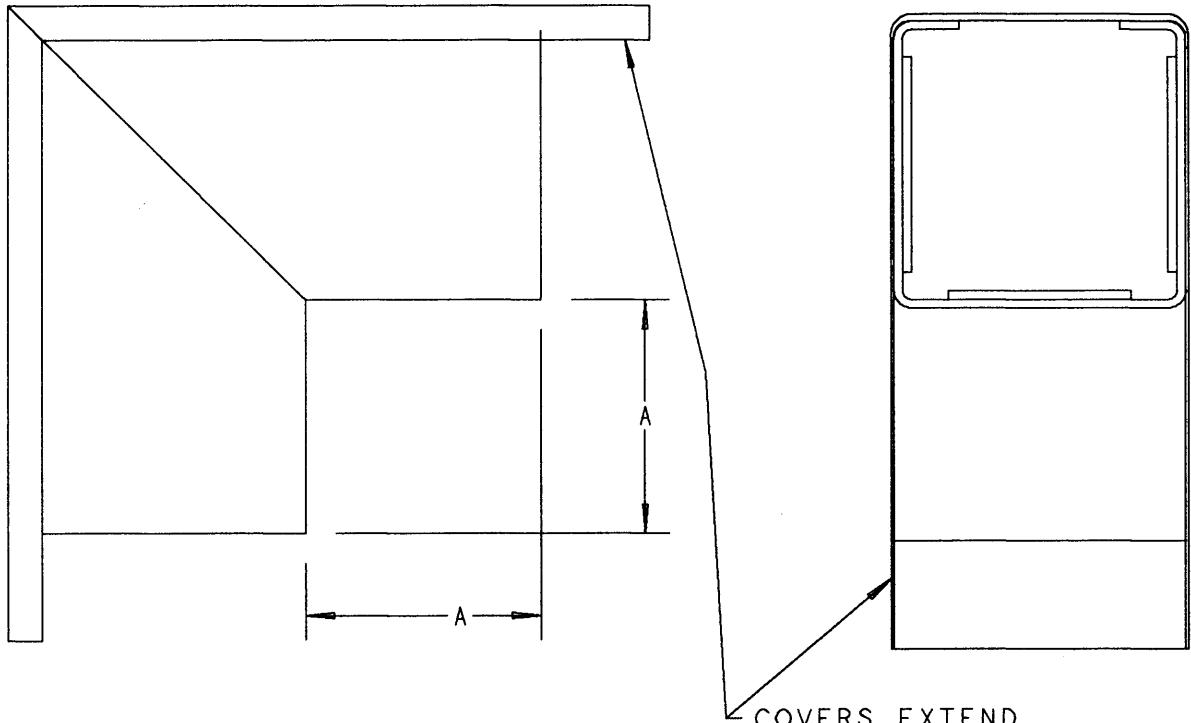


This information provided by:



Gross Automation
www.grossautomation.com

Call Toll Free:
800-349-5827



COVERS EXTEND
APPROXIMATELY
1-1/2" (40MM)
BEYOND BASE

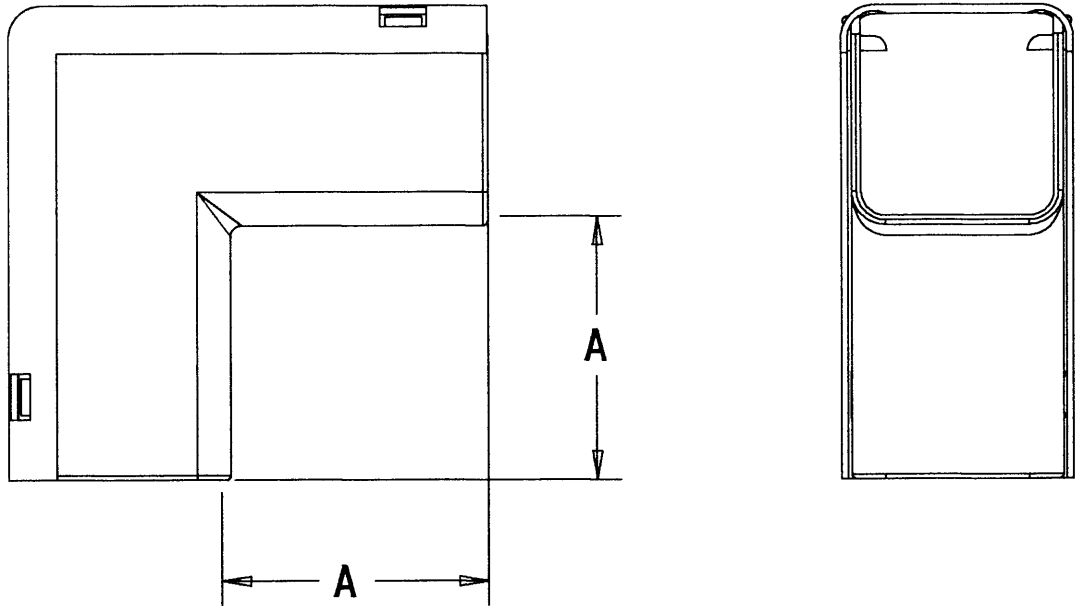
CEP P/N	EGALINE PVC LAY-IN WIREWAY FITTINGS	
	PRODUCT DESCRIPTION	A IN (MM)
EGLEL	3 X 3" EXTERNAL ELBOW	3 (76.2)
EGLEN	4 X 4" EXTERNAL ELBOW	3 (76.2)
EGLER	6 X 6" EXTERNAL ELBOW	4-1/2 (114.3)

P/N'S EGLEJ IS ON DRAWING AC03345

NOTES:

1. PRODUCT IS UL LISTED. FILE E163227
2. MATERIAL : UL 94V-0 PVC
3. COLOR : GRAY

TITLE 90° BEND EXTERNAL COVER - WIREWAY		DRN DJK	DATE 10-7-94	PART NO: EGLE SERIES	
LAMSON & SESSIONS	ALL DRAWINGS ARE THE PROPERTY OF LAMSON & SESSIONS AND SHALL NOT BE REPRODUCED IN ANY FORM WITHOUT LAMSON & SESSIONS' APPROVAL AND ARE TO BE PROMPTLY RETURNED UPON REQUEST.	APP. JIM	DATE 4-20-98	DRAWING NO: AC01943	REV. B



CEP P/N	EGALINE PVC LAY-IN WIREWAY FITTINGS	
	PRODUCT DESCRIPTION	A IN (MM)
EGLEJ	2 X 2" EXTERNAL ELBOW	2.75 (69.6)

P/N'S EGLEL, EGLEN AND EGLER ARE ON DRAWING AC01943

NOTE:

1. PRODUCT IS UL LISTED. FILE E163227
2. MATERIAL: UL 94V-0 PVC
3. COLOR: GRAY
4. EXTERNAL ELBOW IS MOLDED IN UK.

TITLE 90° BEND EXTERNAL ELBOW - WIREWAY		DRN DPR	DATE 1-22-98	PART NO: EGLEJ
LAMSON & SESSIONS	ALL DRAWINGS ARE THE PROPERTY OF LAMSON & SESSIONS AND SHALL NOT BE REPRODUCED IN ANY FORM WITHOUT LAMSON & SESSIONS' APPROVAL AND ARE TO BE PROMPTLY RETURNED UPON REQUEST.	APP. JM	DATE 4-20-98	DRAWING NO: AC03345
		REV.		