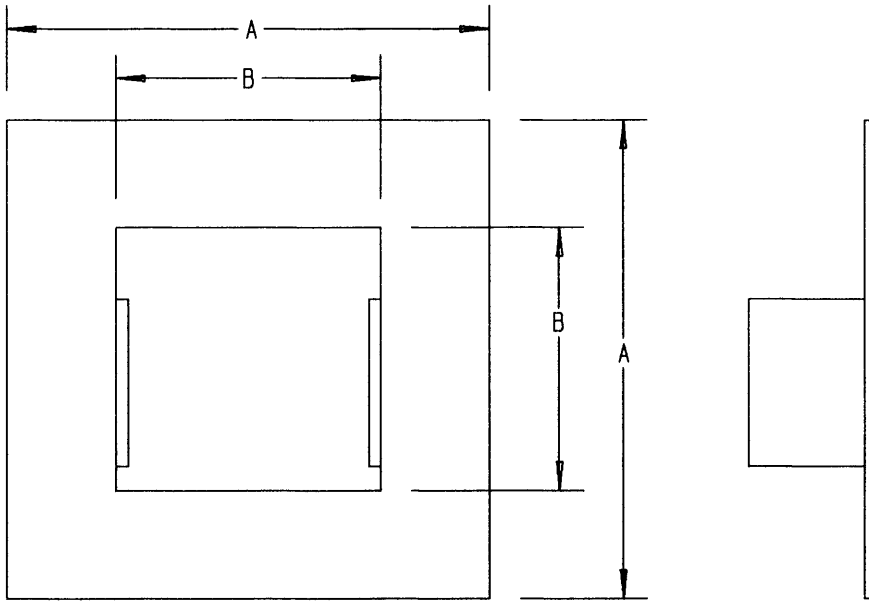


This information provided by:



Gross Automation  
[www.grossautomation.com](http://www.grossautomation.com)

Call Toll Free:  
**800-349-5827**



CEP P/N	EGALINE PVC LAY-IN WIREWAY FITTINGS		
	PRODUCT DESCRIPTION	A <small>IN</small> (MM)	B <small>IN</small> (MM)
EGFJ	2 X 2" FLANGE	4 (101.6)	1.75 (44.45)
EGFL	3 X 3" FLANGE	5 (127.0)	2.75 (69.85)
EGFN	4 X 4" FLANGE	6 (152.4)	3.75 (95.25)
EGFR	6 X 6" FLANGE	8 (203.2)	5.75 (146.05)

- NOTES:
1. MATERIAL : UL 94V-0 PVC
  2. COLOR : GRAY

TITLE <b>FLANGE - WIREWAY</b>		DRN <b>DJK</b>	DATE <b>10-10-94</b>	PART NO.:	<b>EGF SERIES</b>
<b>LAMSON &amp; SESSIONS</b>	ALL DRAWINGS ARE THE PROPERTY OF LAMSON & SESSIONS AND SHALL NOT BE REPRODUCED IN ANY FORM WITHOUT LAMSON & SESSIONS' APPROVAL AND ARE TO BE PROMPTLY RETURNED UPON REQUEST.	APP.	DATE	DRAWING NO.:	
			<b>DM 10-21-94</b> <b>JAT 10-17-94</b>	<b>AC01947</b>	REV. <b>A</b>