

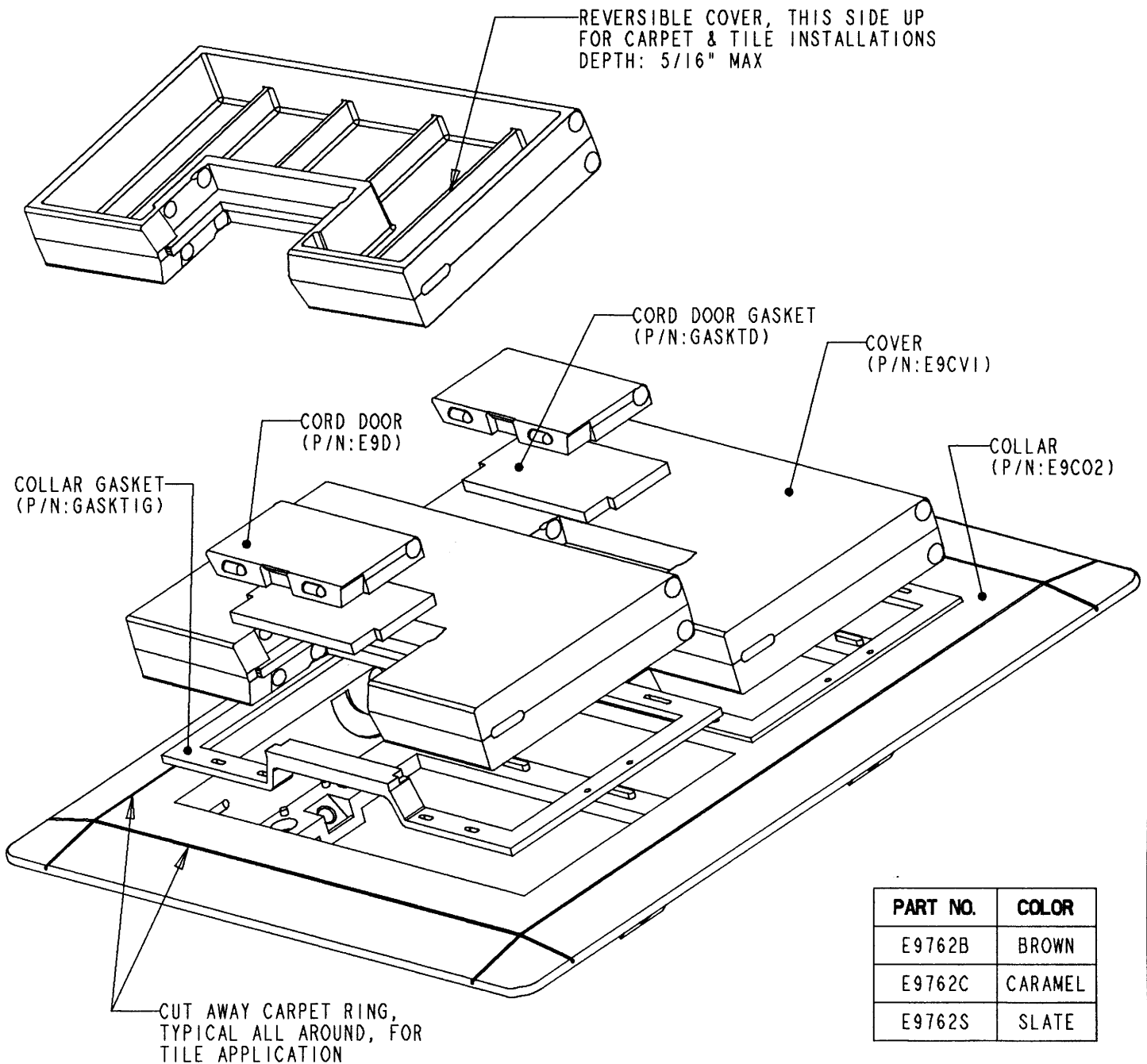
This information provided by:



Gross Automation
www.grossautomation.com

Call Toll Free:
800-349-5827

Carlson
LAMSON & SESSIONS



| PART NO. | COLOR |
|----------|--------|
| E9762B | BROWN |
| E9762C | CARMEL |
| E9762S | SLATE |

NOTES:

- DIMENSIONS ARE IN INCHES AND (MILLIMETERS)
COVER - 5.2 X 2.9 X .73, (132 X 74 X 18); CORD DOOR - 2.1 X 1.1 X .25,
(53 X 28 X 6), COLLAR AND CARPET RING - 7.9 X 8.9 X .95, (200 X 226 X 24);
COLLAR WITH CARPET RING REMOVED - 6.4 X 7.4 X .95, (163 X 188 X 24)
- COLORS AVAILABLE---BROWN, CARMEL AND SLATE.
- SCREW PACK (P/N KE976SP) INCLUDED IN PACKAGE BUT NOT SHOWN.
- U.S. PATENT 5,866,845

| | | | |
|---|--|--------------------------|-------------------------------|
| TITLE COLLAR ASSY, RECT. FLOORBOX, TWO GANG | | DRN. DATE PMW 9/24/96 | PART NO: E9762 |
| LAMSON & SESSIONS | ALL DRAWINGS ARE THE PROPERTY OF LAMSON & SESSIONS AND SHALL NOT BE REPRODUCED IN ANY FORM WITHOUT LAMSON & SESSIONS' APPROVAL AND ARE TO BE PROMPTLY RETURNED UPON REQUEST. | APP. DATE CHR 5/30/97 | DRAWING NO: AC02825 |
| | | | REV. D |