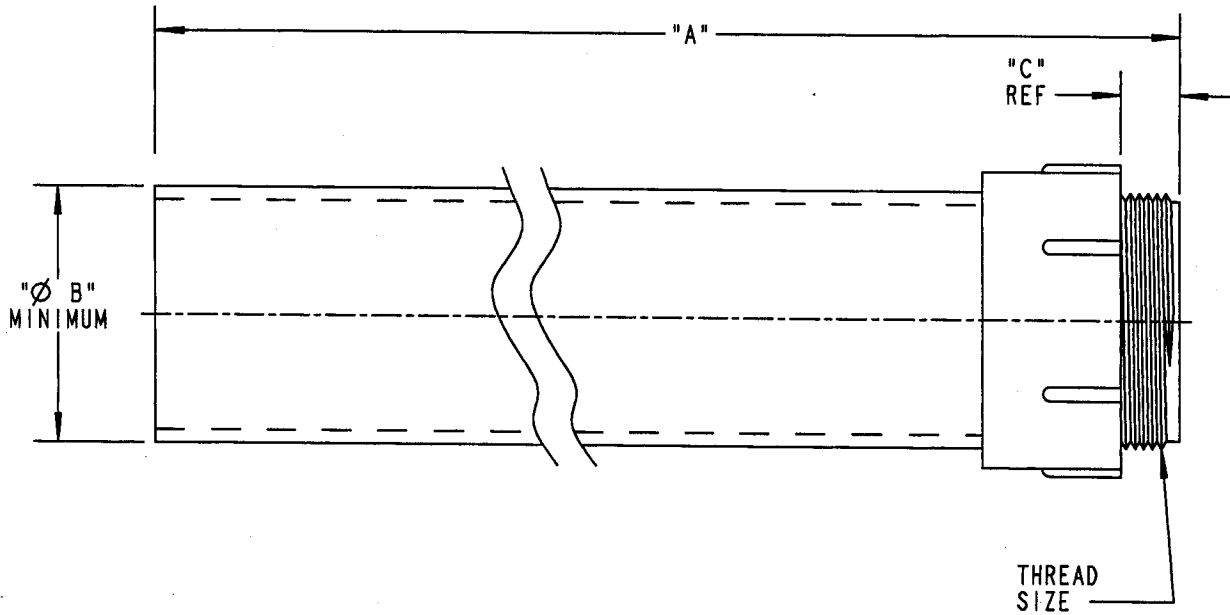


This information provided by:



Gross Automation  
[www.grossautomation.com](http://www.grossautomation.com)

Call Toll Free:  
**800-349-5827**



PART NO.	SIZE	A (LENGTH)	B (MINIMUM)	C	THREAD SIZE
E954HX	1-1/2"	80.00 [2032]	1.567 [39.80]	.950 [24.13]	1-1/2" NPT
E954J	2"	60.00 [1524]	2.024 [51.41]	.825 [20.95]	2" NPT
E954JX	2"	80.00 [2032]	2.024 [51.41]	.825 [20.95]	2" NPT
E954K	2-1/2"	60.00 [1524]	2.418 [61.42]	.812 [20.63]	2-1/2" NPSC
E954KX	2-1/2"	80.00 [2032]	2.418 [61.42]	.812 [20.63]	2-1/2" NPSC
E954L	3"	60.00 [1524]	3.012 [76.50]	.798 [20.27]	3" NPSC
E954LX	3"	80.00 [2032]	3.012 [76.50]	.798 [20.27]	3" NPSC

NOTES:  
1. ALL DIMENSIONS ARE IN INCH/[MILLIMETERS].

TITLE <b>METER RISER, CONDUIT</b>		DRN DPR	DATE 6-24-03	PART NO. <b>SEE TABLE</b>
LAMSON & SESSIONS	ALL DRAWINGS ARE THE PROPERTY OF LAMSON & SESSIONS AND SHALL NOT BE REPRODUCED IN ANY FORM WITHOUT LAMSON & SESSIONS' APPROVAL AND ARE TO BE PROMPTLY RETURNED UPON REQUEST.	APP.	DATE 6/24/03	DRAWING NO. <b>AC04409</b>
				REV.