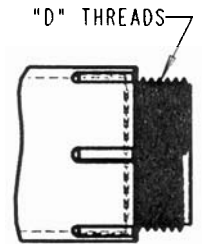
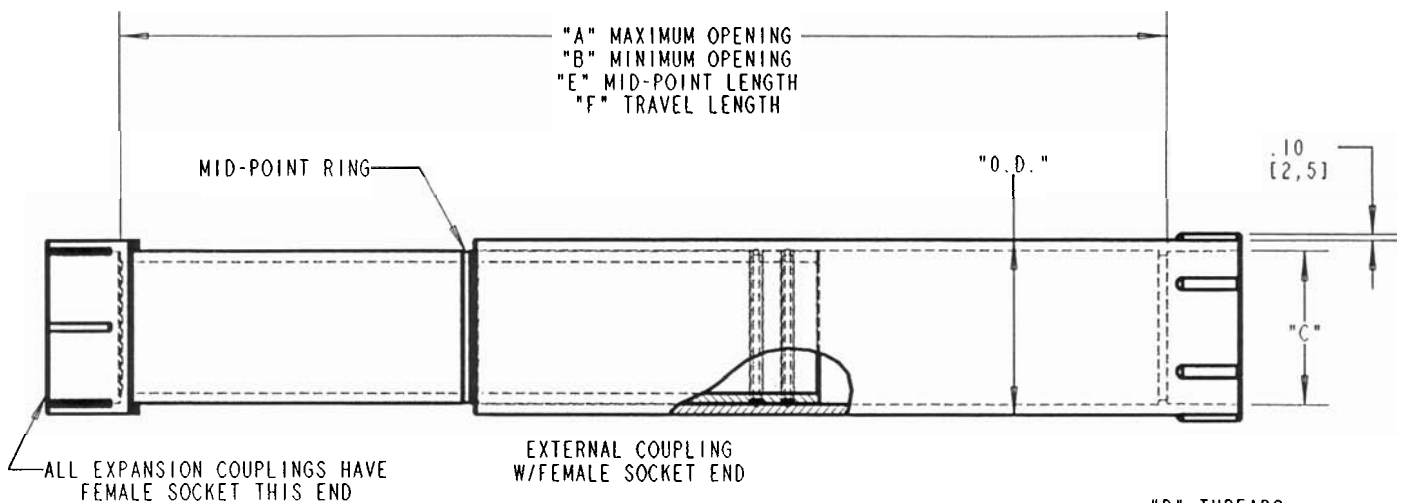


This information provided by:



Gross Automation
www.grossautomation.com

Call Toll Free:
800-349-5827



PART NO.'S WITH "X" SUFFIX TO HAVE MALE THREADS THIS END

INSTALL EXPANSION COUPLING IN COMPLIANCE WITH NATIONAL ELECTRIC CODE[®] SECTION 352.44

TOTAL EXP. CPLG. TRAVEL	TEMPERATURE CHANGE DEGREES F	MAX. DISTANCE BETWEEN EXP. CLPGS.	TEMPERATURE CHANGE DEGREES F	MAX. DISTANCE BETWEEN EXP. CLPGS.
4.00 [101.6]	100° F	100 FT	140 F°	70 FT
8.00 [203.2]	100° F	200 FT	140 F°	140 FT

PART NO. W/FEMALE SOCKET END	PART NO. W/MALE THREAD END	SIZE	DIM. A	DIM. B	O.D.	FEMALE SOCKET SIZE "C"	"D" THREADS (PART NO.'S WITH "X" SUFFIX)	DIM. E	TRAVEL DIM. F
E945D	E945DX	1/2"	9.68 [245.9]	5.68 [144.3]	1.15 (29.2)	1/2"	1/2" NPT	7.70 [195.6]	±2" [50.8] 4" TOTAL TRAVEL
E945E	E945EX	3/4"	9.68 [245.9]	5.68 [144.3]	1.37 (34.9)	3/4"	3/4" NPT		
E945F	E945FX	1"	9.70 [246.4]	5.70 [144.8]	1.68 (42.6)	1"	1" NPT		
E945G	E945GX	1-1/4"	9.71 [246.6]	5.71 [145]	2.04 (51.8)	1-1/4"	1-1/4" NPT		
E945H	E945HX	1-1/2"	9.71 [246.6]	5.71 [145]	2.29 (58.1)	1-1/2"	1-1/2" NPT		
E945J	E945JX	2"	18.11 [460]	10.11 [256.8]	2.82 (71.6)	2"	2" NPT	14.30 [362.2]	±4" [101.6] 8" TOTAL TRAVEL
E945K	E945KX	2-1/2"	18.16 [461.3]	10.16 [258.1]	3.42 (86.8)	2-1/2"	2-1/2" NPS		
E945L	E945LX	3"	18.30 [464.7]	10.30 [261.5]	4.07 (103.4)	3"	3" NPS		
E945M	E945MX	3-1/2"	18.31 [465]	10.31 [261.7]	4.63 (117.5)	3-1/2"	3-1/2" NPS		
E945N	E945NX	4"	18.32 [465.2]	10.32 [262]	5.15 (130.8)	4"	4" NPS		
E945P	E945PX	5"	18.35 [465.9]	10.35 [262.7]	6.26 (158.9)	5"	5" NPS		
E945R	E945RX	6"	18.37 [466.5]	10.37 [263.3]	7.37 (187.1)	5"	6" NPS		

NOTE:
 1. ALL DIMENSIONS ARE IN INCH[MILLIMETERS]
 2. MATERIAL: GRAY PVC

TITLE: EXPANSION COUPLINGS		DRN: DPR	DATE: 4-28-03	PART NO: SEE CHART	
LAMSON & SESSIONS	ALL DRAWINGS ARE THE PROPERTY OF LAMSON & SESSIONS AND SHALL NOT BE REPRODUCED IN ANY FORM WITHOUT LAMSON & SESSIONS' APPROVAL AND ARE TO BE PROMPTLY RETURNED UPON REQUEST.	APP: EGH	DATE: 5-14-03	DRAWING NO: AC04376	REV: C